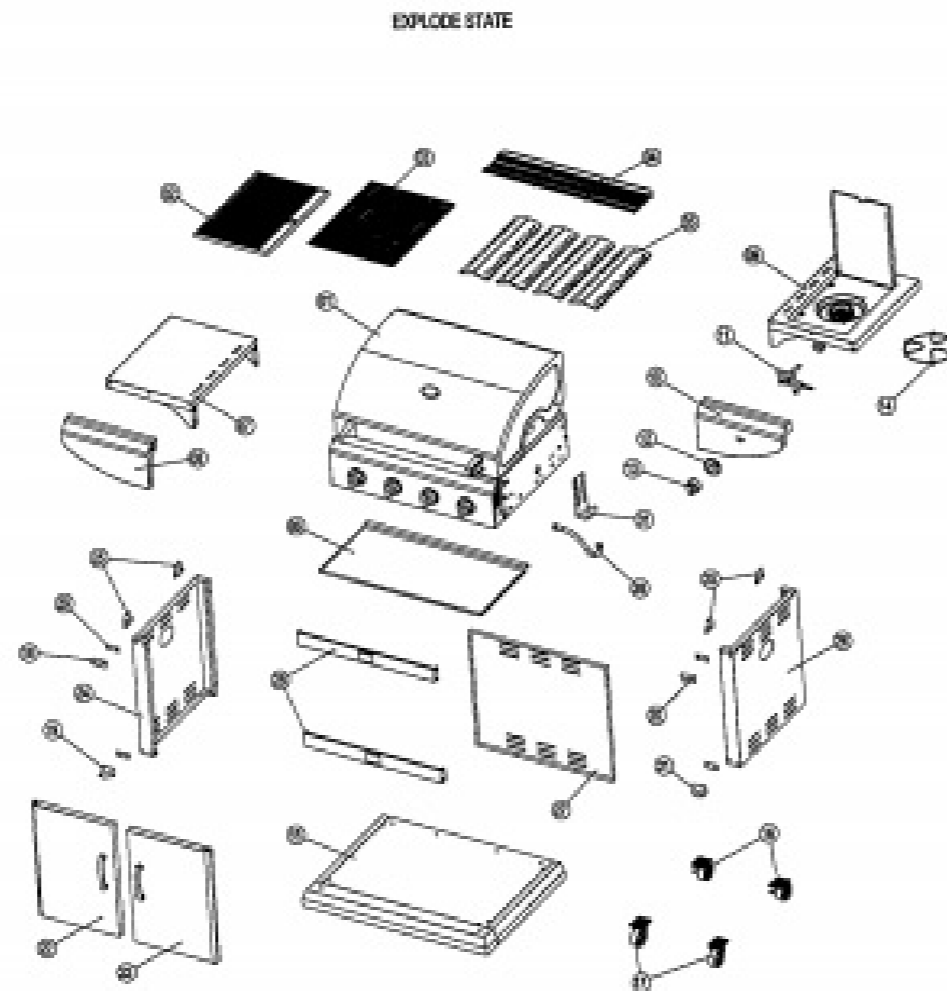


TREND ELEGANCE STEEL 4B



AFTER ASSEMBLY



EXPLODE STATE

PARTS LIST:

- | | |
|--------------------------------------|--------------------------|
| 1 Grill Body Assembly | 2 Casters |
| 1 Cooking Plate | 1 Left Side Upper Hinge |
| 1 Cooking Grills | 1 Left Side Lower Hinge |
| 1 Warming Rack | 1 Right Side Upper Hinge |
| 4 Heat Distributor Plates | 1 Right Side Lower Hinge |
| 1 Grease Tray | 1 Left Side Door |
| 1 Left Side Table Body Assembly | 1 Right Side Door |
| 1 Left Side Table Front Panel | 1 Left Side Panel |
| 1 Right Side Table Body Assembly | 4 Bracket Of Cart |
| 1 Right Side Table Front Panel | 1 Right Side Panel |
| 1 Side Burner Control Valve Assembly | 1 Back Panel |
| 1 Back Of Side Burner | 2 Cart Crossbeam |
| 1 Knob Of Side Burner | 4 Hot Panel |
| 1 Side Burner Grate | 1 Hose |
| 1 Bottom Cart Panel | 1 Cylinder Hook |
| 2 Locking Casters | 1 Parts bag |

| | | | | |
|----|--------|-------------------|----|--|
| 2 | 441447 | Cooking plate 3B | 2 | Trend Elegance Steele 4B - Grillplate (2) |
| 3 | 441448 | Cooking Grills | 3 | Trend Elegance Steele 4B - Grillrist (3) |
| 5 | 441449 | Heat dist. plates | 5 | Trend Elegance Steele 4B - Varmefordeler (5) |
| 6 | 441450 | Grease Tray | 6 | Trend Elegance Steele 4B - Fett oppsamler (6) |
| 7 | 441451 | Left Side Table | 7 | Trend Elegance Steele 4B - Sidebord venstre (7) |
| 8 | 441452 | L.S table f.panel | 8 | Trend Elegance Steele 4B - Front SB venstre (8) |
| 9 | 441453 | Right Side Table | 9 | Trend Elegance Steele 4B - Sidebord m/brenner (9) |
| 10 | 441454 | R.S table f.panel | 10 | Trend Elegance Steele 4B - Front SB høyre (10) |
| 11 | 441478 | SB Control valve | 11 | Trend Elegance Steele 4B - Gasskran til SB (11) |
| 12 | 441455 | Bazel of S.B | 12 | Trend Elegance Steele 4B - Bryter ring (12) |
| 13 | 441456 | Knob of S.B | 13 | Trend Elegance Steele 4B - Bryter til S.B (13) |
| 14 | 441457 | Side Burner Grate | 14 | Trend Elegance Steele 4B - Rist til S.Brenner (14) |
| 15 | 441458 | Bottom Cart Panel | 15 | Trend Elegance Steele 4B - Bunnpanel (15) |
| 16 | 441459 | Locking Casters | 16 | Trend Elegance Steele 4B - Lås til hjul (16) |
| 17 | 441460 | Casters | 17 | Trend Elegance Steele 4B - Hjul (17) |
| 18 | 441483 | L.S upper hinge | 18 | Trend Elegance Steele 4B - Dørhengsel v. oppe (18) |
| 19 | 441482 | L.S lower hinge | 19 | Trend Elegance Steele 4B - Dørhengsel v. nede (19) |
| 20 | 441480 | R.S upper hinge | 20 | Trend Elegance Steele 4B - Dørhengsel h. oppe (20) |
| 21 | 441481 | R.S lower hinge | 21 | Trend Elegance Steele 4B - Dørhengsel h. nede (21) |
| 22 | 441461 | Left side door | 22 | Trend Elegance Steele 4B - Dør venstre (22) |
| 23 | 441462 | Right side door | 23 | Trend Elegance Steele 4B - Dør høyre (23) |
| 24 | 441463 | Left Side Panel | 24 | Trend Elegance Steele 4B - Panel venstre side (24) |
| 25 | 441479 | Bracket of cart | 25 | Trend Elegance Steele 4B - Festbrakett o/u-del(25) |
| 26 | 441464 | Right side panel | 26 | Trend Elegance Steele 4B - Panel høyre side (26) |
| 27 | 441465 | Back Panel | 27 | Trend Elegance Steele 4B - Bakpanel (27) |
| 28 | 441484 | Cart crossbeam | 28 | Trend Elegance Steele 4B - Tverrstag oppe/nede(28) |
| 29 | 441529 | Nut panel | 29 | Trend Elegance Steele 4B - Mutter sidepanel (29) |
| 30 | 441466 | Hose | 30 | Trend Elegance Steele 4B - Gasslange til SB (30) |
| 31 | 441467 | Cylinder Hook | 31 | Trend Elegance Steele 4B - Flaskeholder (31) |
| 32 | 441468 | Parts Bag | 32 | Trend Elegance Steele 4B - Skrupose (32) |