

HARVIA HL

HL700400

Their strong structure and exceptional ease of maintenance make Virta heaters excellently suitable for those who use the sauna often and like to enjoy the steam for long periods of time. All connections to the Virta heater are made through the maintenance hatch on the front. There is plenty of room around the connections. The heating elements are separated from the stones, which results in a long heating element life span. If you need to replace a heating element, it is a quick and easy task, as you can just pull out the entire heating element module. Other maintenance measures were also taken into account in the heaters' design from the very start.

Advantages

- A reliable heater with sturdy structure for home sauna and professional use
- The large number of stones guarantees soft and abundant steam. Efficient air circulation heats the sauna very quickly
- Sleek and modern design
- The heating elements are separated from the stones, which results in a long heating element life span
- The maintenance hatch on the front enables quick and easy maintenance without touching the stones



Features

Main material : Steel

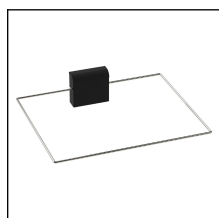
H x W x D : 810.0 x 415.0 x 410.0 mm

Net weight (kg) : 23.8

Installation type : Floor

| ID | GTIN | Output (kW) | Sauna room size min - max m3 |
|----------|---------------|-------------|------------------------------|
| HL700400 | 6410082613113 | 7 kW | 5.0-10.0 |

Related products



SFE-350400



HL1



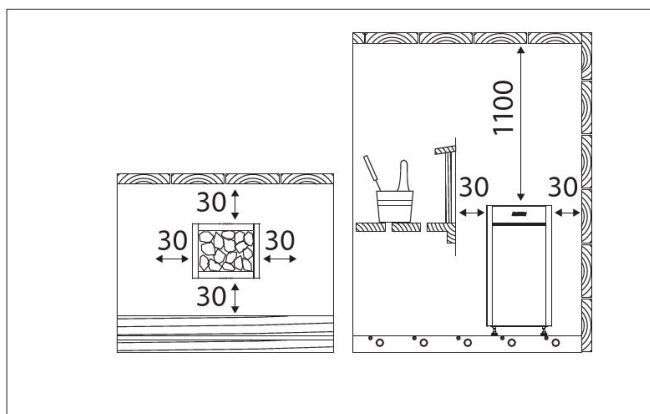
HL2



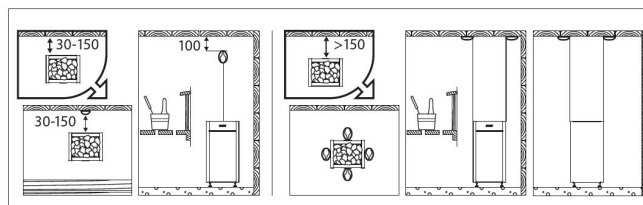
Technical details

| Technical data | Type / attribute | HL700400 |
|------------------------------------|--|----------|
| | Color | Black |
| | Power output | 7 kW |
| | Stone sizes | 10-15 cm |
| | Stone amount (kg) | 50 |
| Dimensions | Product width (mm) | 415 |
| | Product height (mm) | 810 |
| | Product depth (mm) | 410 |
| | Net weight (kg) | 23.8 |
| | Gross weight | 26 |
| | Package width | 505 |
| | Package height | 870 |
| | Package depth | 440 |
| Safety and installation dimensions | Safety distance front (non-combustible materials) | 30 |
| | Safety distance front (combustible materials) | 30 |
| | Safety distance side (non-combustible materials) | 30 |
| | Safety distance side (combustible materials) | 30 |
| | Safety distance behind (non-combustible materials) | 30 |
| | Safety distance (Ceiling) (depends on connections and therefore from output, star/delta) | 1100 |
| | Room min. height(depends on connections and therefore from output, star/delta) | 1900 |
| | Installation opening height | 1900 |
| | Installation opening width | 475 |
| | Installation opening depth | 400 |

Technical images

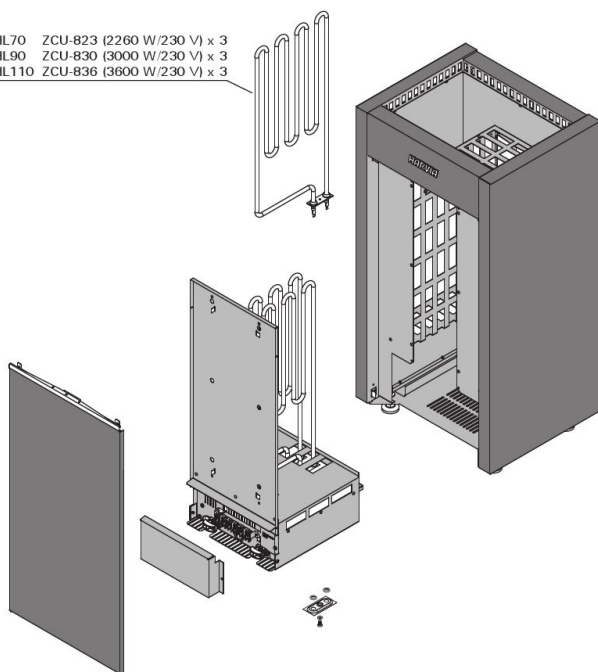


Minimum safety distances (all dimensions in millimeters)

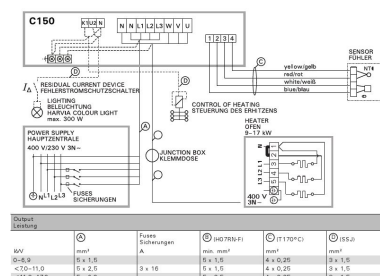


Installing the sensor (all dimensions in millimeters)

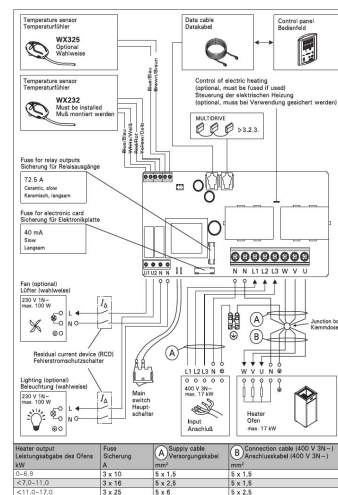
HL70 ZCU-823 (2260 W/230 V) x 3
HL90 ZCU-830 (3000 W/230 V) x 3
HL110 ZCU-836 (3600 W/230 V) x 3



We recommend to use only the manufacturer's spare parts.



Electrical connections of control unit C150 and HL heater



Electrical connections of control unit C175 and HL heater

